

Fan-Tastic Tote Bag

by Erin Underwood

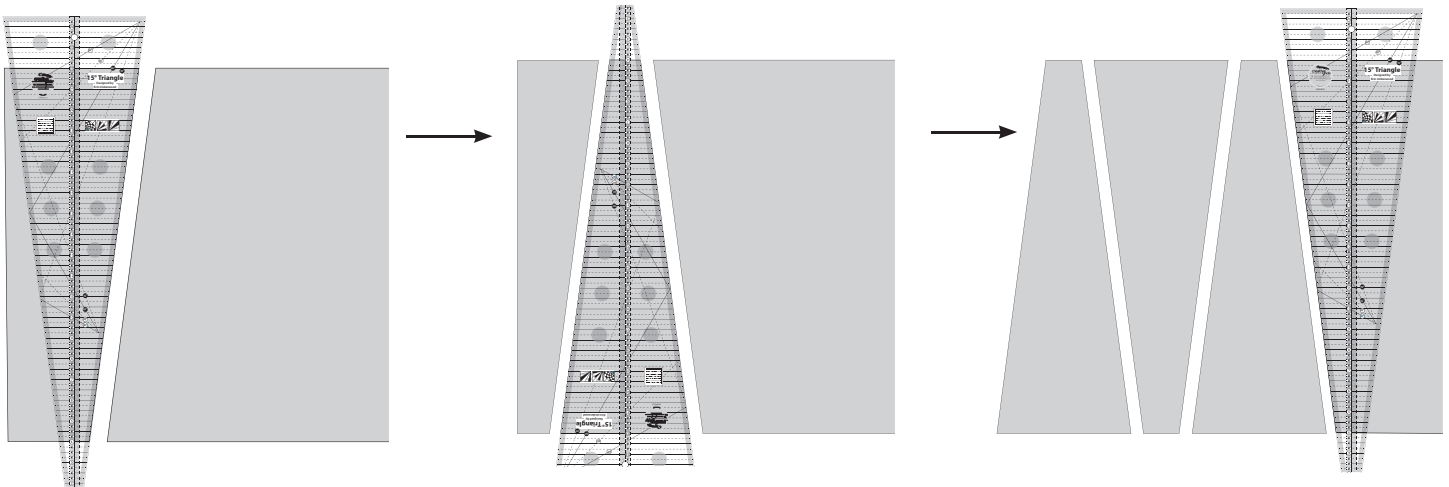
Supplies:

- Creative Grids 15-Degree Ruler
- 24" ruler
- Rotary cutter and Mat
- Basic sewing supplies
- 1/4" foot
- Walking/Free-motion foot for quilting

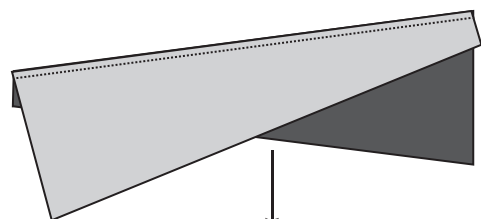
Fabric	
Lining	18" x 40-3/4"
Handles	2 strips at 32" x 4-1/2"
Bag fabric	Scraps of fabric at least 8" x 18" per wedge, bag needs 12 wedges.
Fusible Batting	1-1/4" yards

Cutting wedges for bag:

Cut the fabric into 18" wide strips. Using the Creative Grids 15-Degree Ruler, align it on the fabric with the 22" line on the top edge of the fabric and the 4" line on the bottom edge. Make the first cut. Flip the ruler over and line it up with the cut edge. Make sure the bottom of the strip is on the 24" line and the top of the strip is on the 4" line. Cut to create the first wedge. Continue flipping and cutting until you have the desired amount of wedges from that fabric. 12 total are needed for the tote bag.

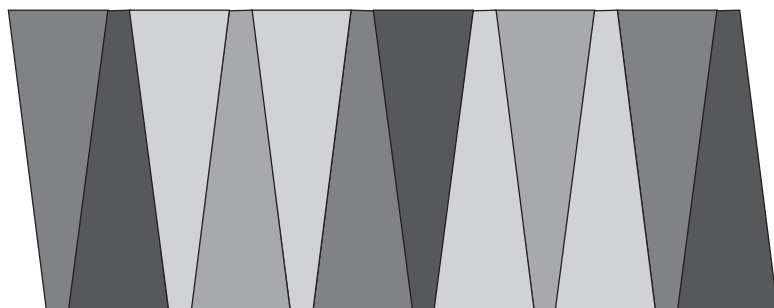
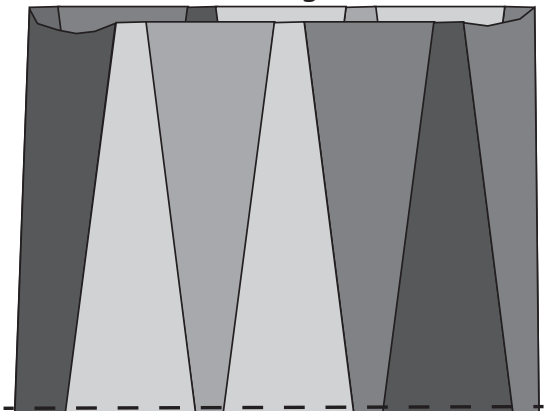


Sew all 12 wedges together with a 1/4" seam allowance to create a long strip. Press seams in one direction. Cut a piece of fusible batting to fit and

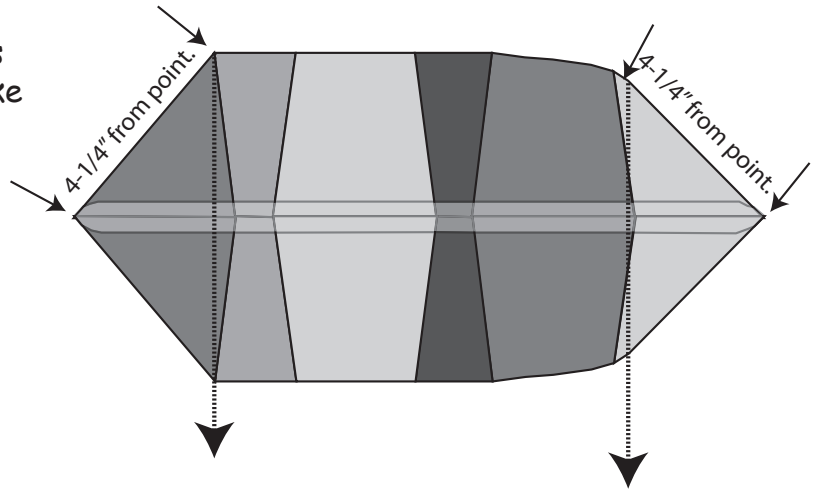


apply it wrong side of the pieced strip. Quilt as desired.

Sew the first wedge to the last wedge to make a "circle". With rights sides together, fold flat and sew across the bottom edge with a 1/4" seam. (picture does not show batting).



Press the bottom seam open. Flatten out the bag so the bottom seam is centered. The sides will automatically make points on either end. Sew a seam $4\frac{1}{4}$ " down from the point to create the "sides" of the bag. See illustration.

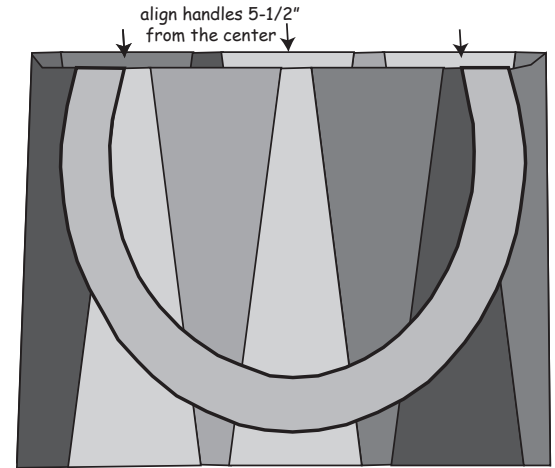


Lining: Cut a piece of fusible batting $40\frac{3}{4}$ " x 18" and apply it wrong side of the lining fabric. Quilt as desired.

With right sides together, fold the lining in half and sew the 18" sides together but leave a gap in the seam to turn the bag through later. Press seam open.

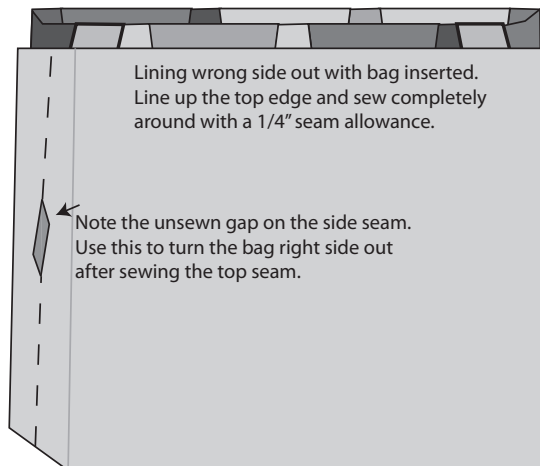
Next finish the bottom edge of the lining in the same manner as the bag fabric.

Straps for bag: Fold under one long side of each handle $\frac{1}{4}$ " and press. Cut two 1" x 32" strips of fusible batting. Apply a batting strip in the center of each $4\frac{1}{2}$ " x 32" handle. Fold the unpressed edge of the strip over the batting and then fold the pressed side over the raw edge. Top-stitch the seam closed. You may prefer to add more stitching here or even a decorative design.



Apply handles to the bag with right sides together. Adjust for length at this point. Make sure the inside edge of the handles are $5\frac{1}{2}$ " from center. Baste in place.

Insert the entire bag into the lining, right sides together. Align the top edge and sew a $\frac{1}{4}$ " seam all the way around. You may want to add extra stitching at the handles for reinforcement. Press seams toward the lining.



Turn the bag right side out through the hole in the side of the lining. Hand stitch the opening closed. Top stitching around the top edge of the bag will help keep the edge smooth.

