

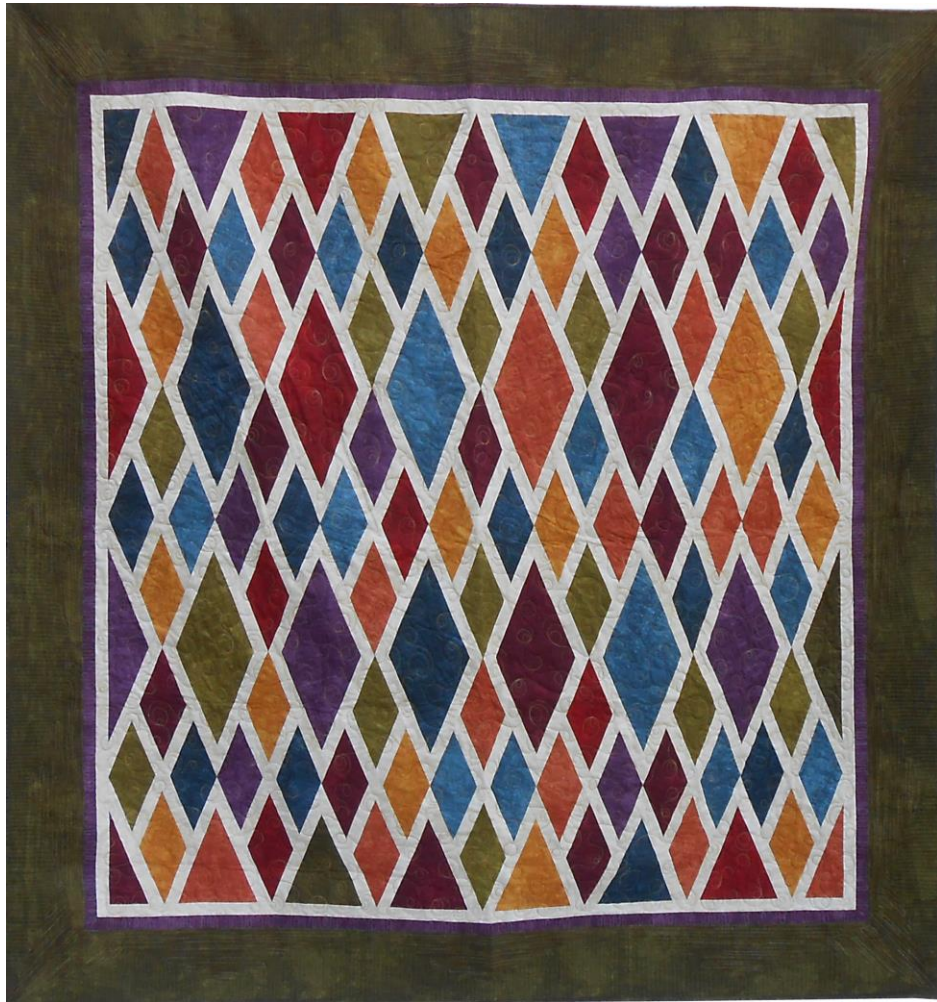
Corrections for Diamond Collage

Pg 3 - Cutting chart

Cutting 4-patch Diamonds - use 4" strips.

Pg 3 - 2nd paragraph from the bottom.

Turn the strip set around and align the cut edge on the 4" 45-degree line. The bottom and top of the strip set should be even with top and bottom of the ruler. Cut along the 45-degree angle.



So sorry for any problems this may have caused you!